



Create memorable events at Gardens by the Bay



Gardens
by the Bay



Whether it's the stunning floral displays in the Flower Dome, the exotic plants on the 35m-tall mountain in the Cloud Forest, the whimsical floral artistry in Floral Fantasy, or the awe-inspiring Supertrees, Gardens by the Bay has something that will appeal to everyone.

Attractions

Sustainability



Opened in 2012, the Gardens has welcomed more than 50 million visitors in 2019. But beyond just being one of Singapore's top attractions, Gardens by the Bay is also an advocate of sustainability principles. Horticultural waste from the Gardens and around Singapore is turned into energy to power the chillers of Flower Dome and Cloud Forest. Several of the Supertrees have photovoltaic cells on their canopies, which allows solar energy to be harnessed to light them up at night.

From The Meadow, Singapore's largest outdoor garden events venue with a standing capacity of up to 30,000 people, to the picturesque Flower Field Hall, nestled in Flower Dome amidst a Mediterranean garden, Gardens by the Bay offers a choice of event spaces for an exclusive and extraordinary experience in a garden-setting.



The Meadow



Flower Field Hall



Floral Fantasy

Awards

World's Largest Glass Greenhouse - Flower Dome
Guinness World Records 2015

Best Attraction Experience
Singapore Tourism Awards 2019

2019 Certificate of Excellence Hall of Fame (2015-2019)
Gardens by the Bay, Cloud Forest and Flower Dome
TripAdvisor

Top 25 Landmarks in Asia - Supertree Grove
TripAdvisor Travellers' Choice Awards 2018

Top Tourist Attraction
Influential Brands 2017 & 2018

Best Attraction - Top 3
AsiaOne People's Choice Awards 2014, 2015 & 2016
Singapore Press Holdings

Top 20 Most Checked-Into Places in the World
Facebook 2015 Year in Review

Best Attraction
Travel Weekly Asia Reader's Choice Awards 2015 & 2016

Best Theme Attraction
TTG Travel Awards 2015 & 2016



Accolades

"Top 10 Indoor Gardens of the World"
FoxNews.com

**"Avatar in real life:
Singapore's Gardens by the Bay"**
The Sydney Morning Herald

"World's Ten Best Sky Gardens"
CNN.com

"The world's most unusual gardens"
The Telegraph

"A living wonder in Singapore"
BBC.com

"An urban jungle for the 21st century"
International Herald Tribune

"Most Instagrammed Garden Around the World"
Stylist.co.uk

"10 blockbuster buildings from around the world"
Architectural Digest

**"10 Stunning Greenhouse Conservatories
Around the World"**
Architectural Digest

Precautionary Measures



The safety of our visitors remains our top priority. Just as we have done with the outdoor gardens, we have put in place safety measures to make our indoor gardens a place of wellness during this period. Please respect the new visiting guidelines we have put in place in accordance with government regulations, detailed below.

These include:

- Deployment of Safe Distancing Ambassadors on site
- Automatic entry and exit doors to reduce contact
- Regular application of self-disinfecting coating on high contact surfaces like lift buttons and escalation railings
- Hourly sanitisation of public amenities like toilets
- Hand sanitiser solution available at all entrances, exits and high contact areas
- The conservatories' air chilling system is equipped with high performance germicidal Ultra Violet (C) emitters similar to those used in healthcare institutions to improve air quality



The preventive measures implemented have been validated by a government-appointed agency, and Gardens by the Bay has been certified and awarded the SG Clean quality mark by the Singapore Government. SG Clean is a national mark of excellences that recognises business that adhere to high standards of environmental public hygiene on their premises.



Flower Dome

Step into the Flower Dome and stand in awe of nature. Spectacular and innovative, it is the largest glass greenhouse in the world as listed in the 2015 Guinness World Records! Be amazed by changing display of flowers and plants from the Mediterranean and semi-arid regions.



Cloud Forest

Explore the tropical highlands amidst orchids, pitcher plants and ferns from the cool-moist Tropical Montane region. Be amazed as you encounter our breath-taking indoor waterfall at 30 metres and descend through the surreal mist-filled Cloud Walk and Treetop Walk.



Supertree Grove



Measuring between 25 and 50 metres tall, Gardens by the Bay's Supertrees are designed with large canopies that provide shade in the day and come alive with an exhilarating display of lights and sounds at night.

OCBC Skyway

Get an up-close look at the technical marvels of the Gardens' futuristic attraction by strolling along OCBC Skyway, which connects 2 of these towering Supertrees. This 128-metre long aerial walkway is an experience not to be missed, giving visitors glorious photo-taking opportunities to capture the scenic beauty of the surrounding flora.





Supertree Observatory, in addition to OCBC Skyway, provides greater accessibility for visitors to enjoy scenic views of the Marina Bay area and the lush surroundings of Gardens by the Bay. Located at the canopy of the tallest Supertree at Supertree Grove, visitors can soak in unblocked cityscape views at our open-air rooftop deck, enjoy light refreshments and try out immersive digital learning experiences inside our observatory space.

Supertree Observatory

Floral Fantasy



Flowers, artistry and technology come together to create a dream-like, fantastical experience for visitors at Floral Fantasy. It comprises four diverse garden landscapes, each showcasing a different concept, as well as a 4D ride.

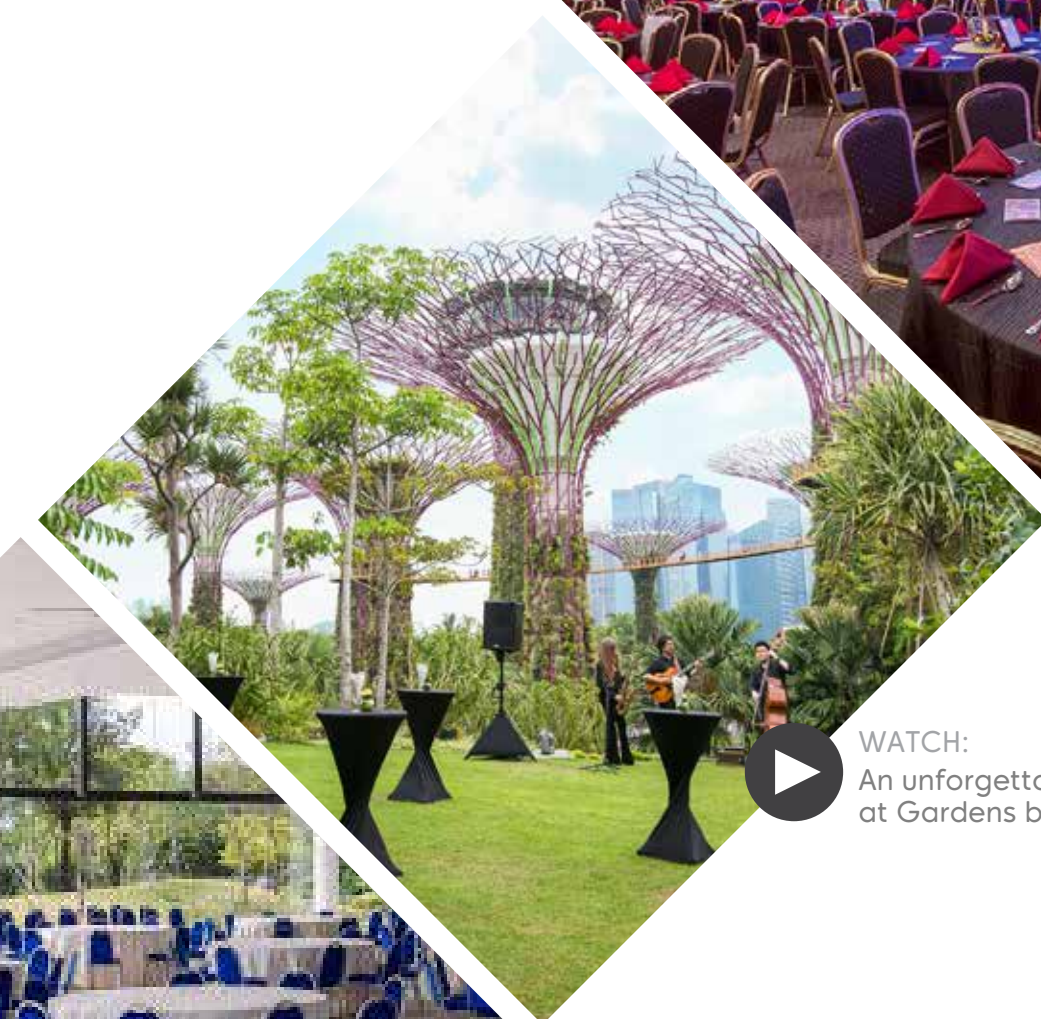


Event Venues

With verdant backdrops and picturesque marina views, the Gardens make for an ideal setting to host an unforgettable event.

From cosy indoor spaces to spacious al fresco areas, choose the perfect venue to throw an intimate celebration or a large-scale function.

WATCH:
Event Venue Spaces
@ Gardens by the Bay



WATCH:
An unforgettable experience
at Gardens by the Bay



Flower Field Hall



Nestled within Flower Dome, Flower Field Hall engages guests with a sensory experience. Guests will have a memorable time marvelling at the uniqueness of events held here. Overlooking the changing Flower Field display on one side, and a spectacular view of the Marina Bay skyline on the other, this indoor space captivates with its picturesque backdrop of perpetual spring. Specially programmed LED lights add to the enchanting setting by cycling through a rainbow of colours.

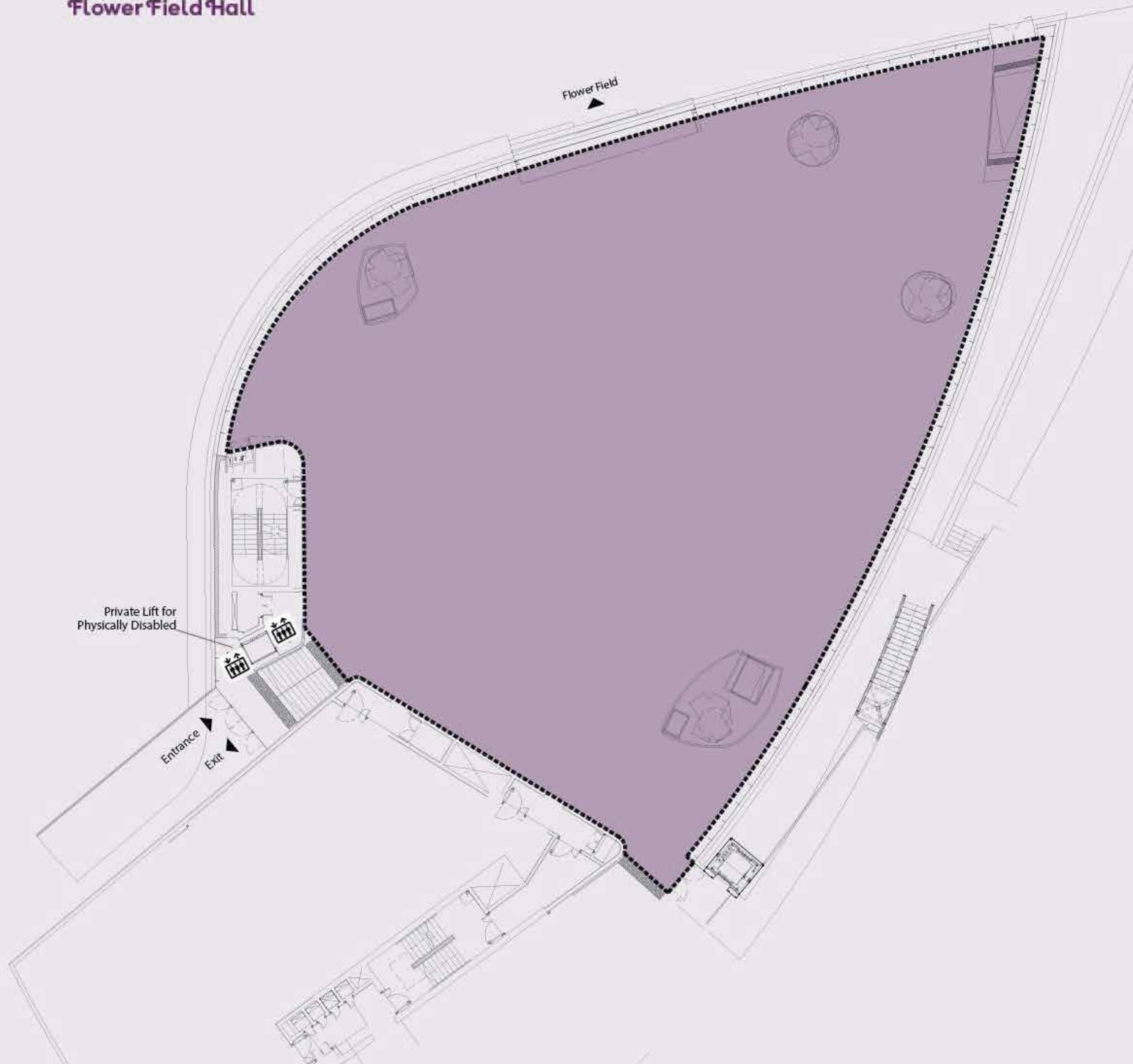
Suitable for

- Fashion Shows
- Gala Dinners
- MICE Events
- Product Launches
- Special-themed Events
- Weddings

Transport / Access

- Chauffeur-driven Garden Cruisers can be pre-arranged to ferry guests to the venue
- Nearest carpark is Main Entrance Basement Carpark with 420 carpark lots
- About a 5-minute walk from the Visitor Centre, Coach Bay and Main Entrance Basement Carpark
- About a 15-minute walk from Bayfront MRT Station
- About 5-minute ride via Shuttle Service from Bayfront Plaza

Flower Field Hall



LOCATION



Size

• 1,200 square metres

Facilities

- Exclusive entrance to Flower Dome
- Private hospitality desk for guest registration
- Exquisite VIP holding room with fully furnished facilities and ensuite bathroom can be pre-arranged
- Basic sound system, projectors and projection screen
- Well-equipped kitchen for on-site cooking (Chinese and Western banquet) and food preparation area
- Exclusive washrooms for guests
- Private lifts for guests and the physically disabled
- Loading/unloading lifts

Waterview Room



Be enthralled by the Marina Bay waterfront view and Bay East Garden while enjoying precious moments. The Waterview Room can be used as a standalone room for private events or to complement events taking place in the Flower Field Hall as both venues are adjoining.

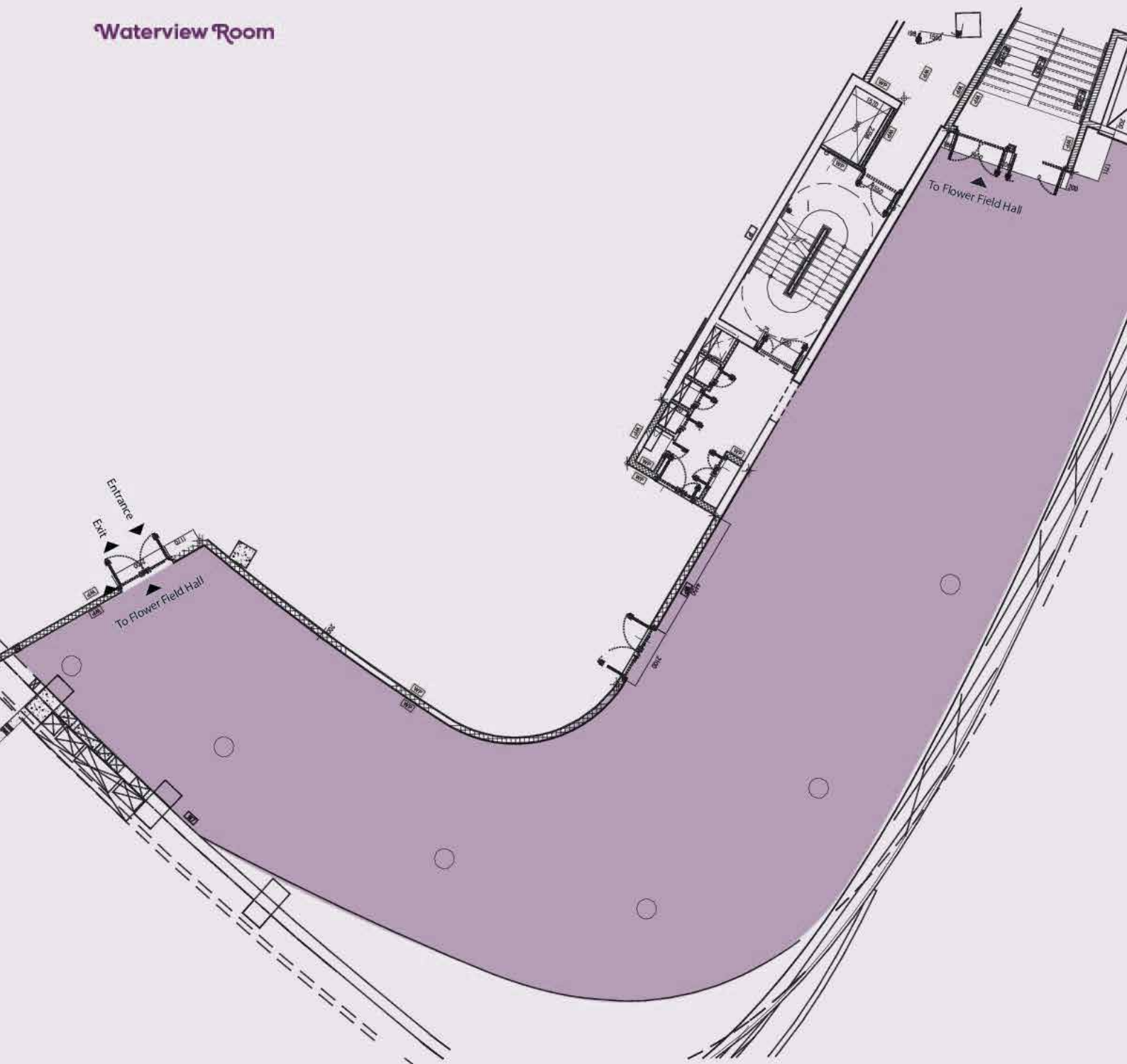
Suitable for

- Cocktail Receptions
- Product Launches
- Seminars and Workshops
- Special-themed Events
- Weddings

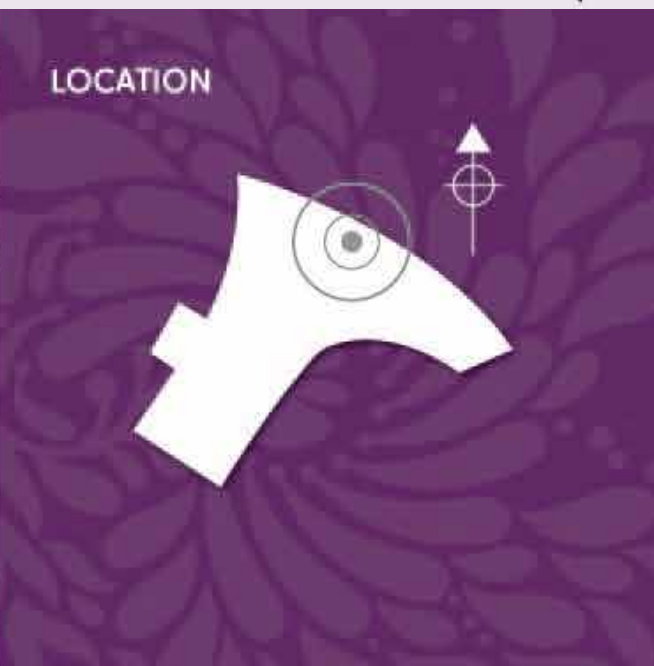
Transport / Access

- Chauffeur-driven Garden Cruisers can be pre-arranged to ferry guests to the venue
- Nearest carpark is Main Entrance Basement Carpark with 420 carpark lots
- About a 5-minute walk from the Visitor Centre, Coach Bay and Main Entrance Basement Carpark
- About a 15-minute walk from Bayfront MRT Station
- About 5-minute ride via Shuttle Service from Bayfront Plaza

Waterview Room



LOCATION



Size

- 600 square metres

Facilities

- Basic sound system, projectors and projection screen
- Well-equipped food preparation area including steel counter-tops, ice-making machine, chillers and freezers
- Exclusive washrooms for guests
- Loading/unloading lifts

The Meadow



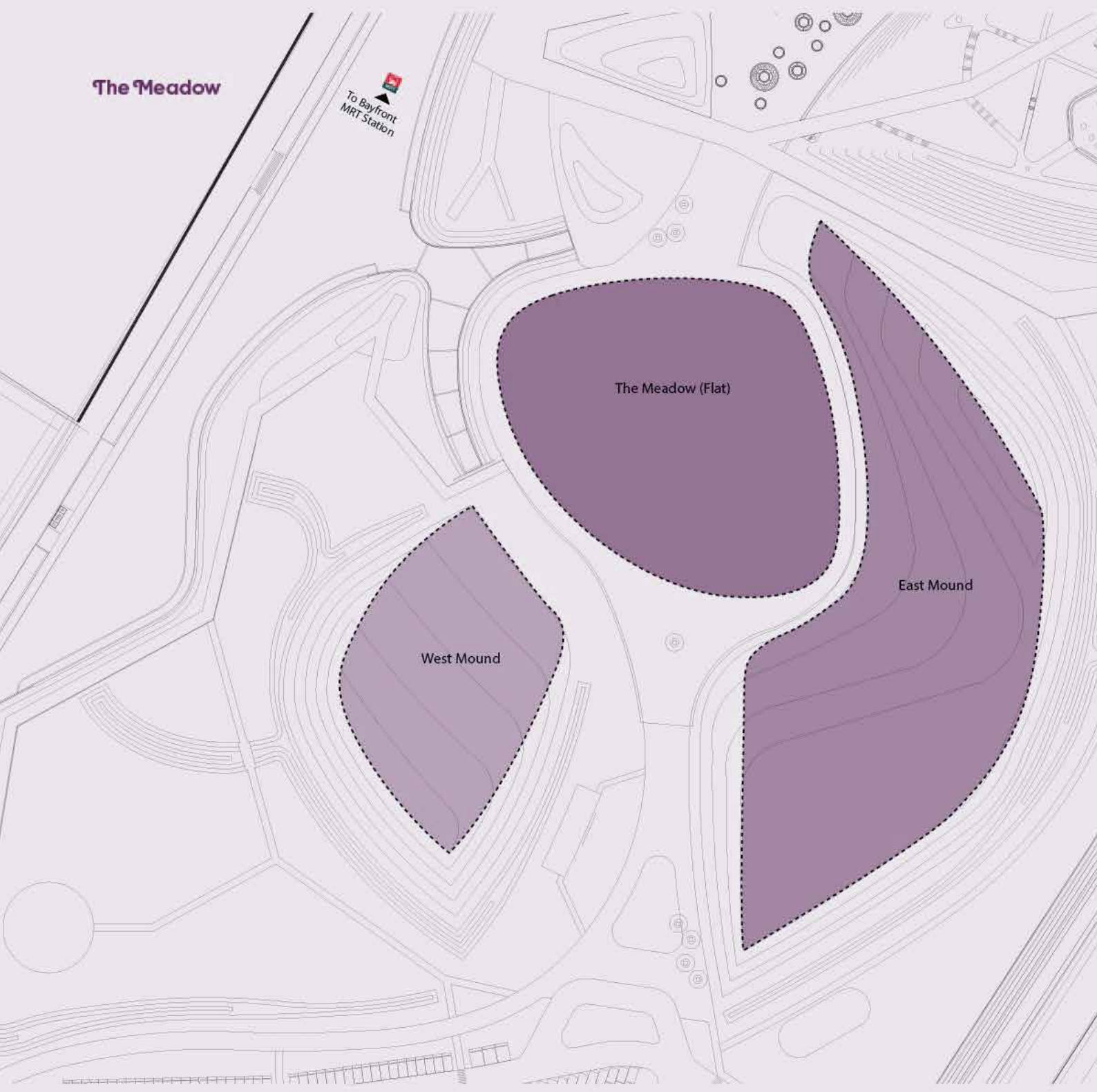
The Meadow is Singapore's largest outdoor garden event space – it boasts a standing capacity of up to 30,000 people. The panoramic view of the iconic Conservatories, Supertrees and Singapore's downtown cityscape provides a stunning backdrop for mega events and nights to remember.

Suitable for

- Concerts
- Festivals and Carnivals
- Incentive Dinners
- Mass Community Events
- Product Launches
- Special-themed Events
- Sports-themed Events

Transport / Access

- Chauffeur-driven Garden Cruisers can be pre-arranged to ferry guests to the venue
- Nearest carpark is The Meadow Carpark with 285 carpark lots
- About a 3-minute walk from The Meadow Carpark
- About a 5-minute walk from Bayfront MRT Station



LOCATION



Size

- 22,000 square metres

Facilities

- Eastern and western lawns for sitting
- Nearby power distribution boxes for power consumption
- Designated access for service vehicles

Silver Leaf



Under the canopy of silver-hued Supertrees and overlooking the Dragonfly Lake, Silver Leaf offers an intimate setting for private and exclusive events. The scenic garden setting yields countless picture-perfect moments, with the iconic Flower Dome and Marina Bay skyline in the background.

Suitable for

- Exclusive Cocktail Receptions and Dinners
- Outdoor Weddings and Solemnisations
- Product Launches
- Special-themed Events

Transport / Access

- Chauffeur-driven Garden Cruisers can be pre-arranged to ferry guests to the venue
- Nearest carpark is Main Entrance Basement Carpark with 420 carpark lots
- About a 10-minute walk from the Visitor Centre, Coach Bay, Main Entrance Basement Car Park and Bayfront MRT Station
- About 5-minute ride via Shuttle Service from Bayfront Plaza

Silver Leaf

To Bayfront
MRT Station

Main
Entrance

To Flower Dome
and Cloud Forest

Existing
staircase

Dragonfly Lake

LOCATION



Size

• 1360 square metres

Facilities

- Nearby power distribution boxes for power consumption
- Designated access for service vehicles

Secret Life of Trees



With superb views of Supertree Grove, Secret Life of Trees is an elevated yet intimate garden, ideal for private functions and exclusive events. The picturesque al fresco setting promises countless photo opportunities and moments to treasure, especially when the Supertrees come alive in an exhilarating display of dancing lights at night.

Suitable for

- Cocktail Receptions
- Outdoor Weddings and Solemnisations
- Product Launches
- Special-themed Events

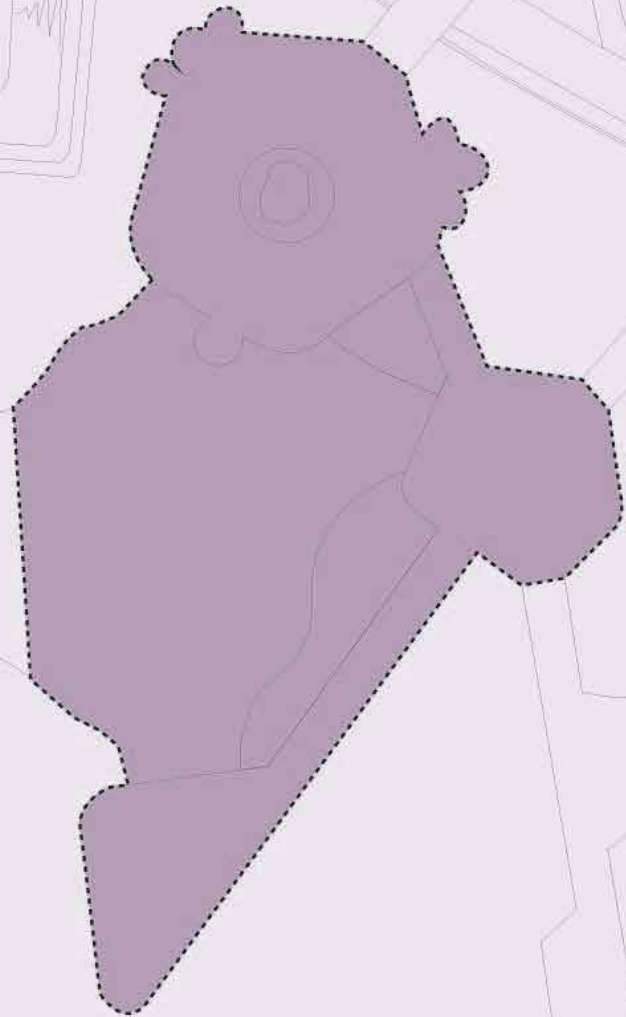
Transport / Access

- Chauffeur-driven Garden Cruisers can be pre-arranged to ferry guests to the venue
- Nearest carpark is Main Entrance Basement Carpark with 420 carpark lots
- About a 5-minute walk from Visitor Centre, Coach Bay and Main Entrance Basement Carpark
- About a 10-minute walk from Bayfront MRT Station

**Secret Life
of Trees**

▲
To Flower Dome
and Cloud Forest

■
To Bayfront
MRT Station



LOCATION



Size

- 475 square metres (Secret Life of Trees)
- 165 square metres (Flat Lawn)

Facilities

- Power distribution boxes for power consumption

Champagne @ OCBC Skyway



Arcing across Supertree Grove, OCBC Skyway is an aerial walkway 22 metres above ground. Guests will enjoy a scenic stroll with breathtaking views of the city skyline. The Garden Rhapsody light and sound show will be exclusively scheduled for guests to marvel at the Supertrees in a musical display of special effects.

Suitable for

- Drinks Receptions

Transport / Access

- Available for bookings from 9pm to 11:30pm only
- Chauffeur-driven Garden Cruisers available to ferry guests to the venue
- Nearest carpark is Main Entrance Basement Carpark with 420 carpark lots
- About a 5-minute walk from the Visitor Centre, Coach Bay, Main Entrance Basement Car Park and Bayfront MRT Station

Champagne @ OCBC Skyway

▲
To Flower Dome
and Cloud Forest

■
To Bayfront
MRT Station

LOCATION



Size

- 128 metres long

Facilities

- Specially scheduled Garden Rhapsody light and sound show
- Bar setup area at ground level

Supertree Observatory



Located 50 metres above ground at the canopy of the tallest Supertree, Supertree Observatory is the highest point in Gardens by the Bay. Your guests can soak in 360 degree panoramic views of the Marina Bay area and the lush surroundings of Gardens by the Bay from our open-air rooftop deck.

Suitable for

- Cocktail Receptions
- Wedding Solemnisations

Transport / Access

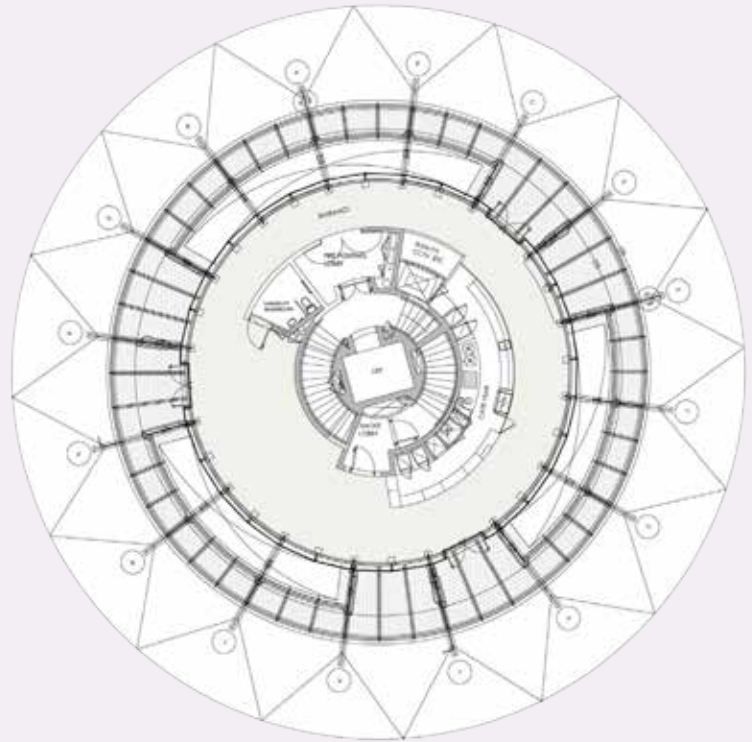
- Nearest carpark is Main Entrance Basement Carpark with 420 carpark lots
- About a 5-minute walk from the Visitor Centre, Coach Bay, Main Entrance Basement Car Park and Bayfront MRT Station

Supertree Observatory

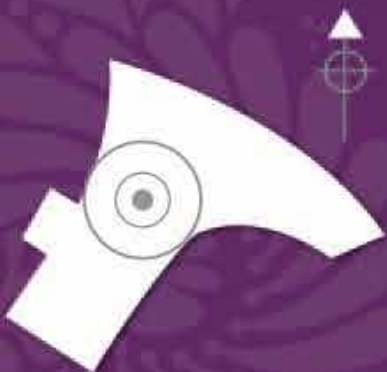
LEVEL 4 PLAN (ROOF TOP)



LEVEL 3 PLAN (CAFE)



LOCATION



Size

- Area for Indoor: 120 square metres
- Area for Roof Top: 140 square metres

Mediterranean Garden



Housed in Flower Dome, the world's largest glass greenhouse as listed in the 2015 Guinness World Records, Mediterranean Garden offers a romantic setting for your wedding. Be transported to a scene right out of a fairy tale with the trellis archway and elegant Canary Island Date Palms, amidst native Mediterranean plants.

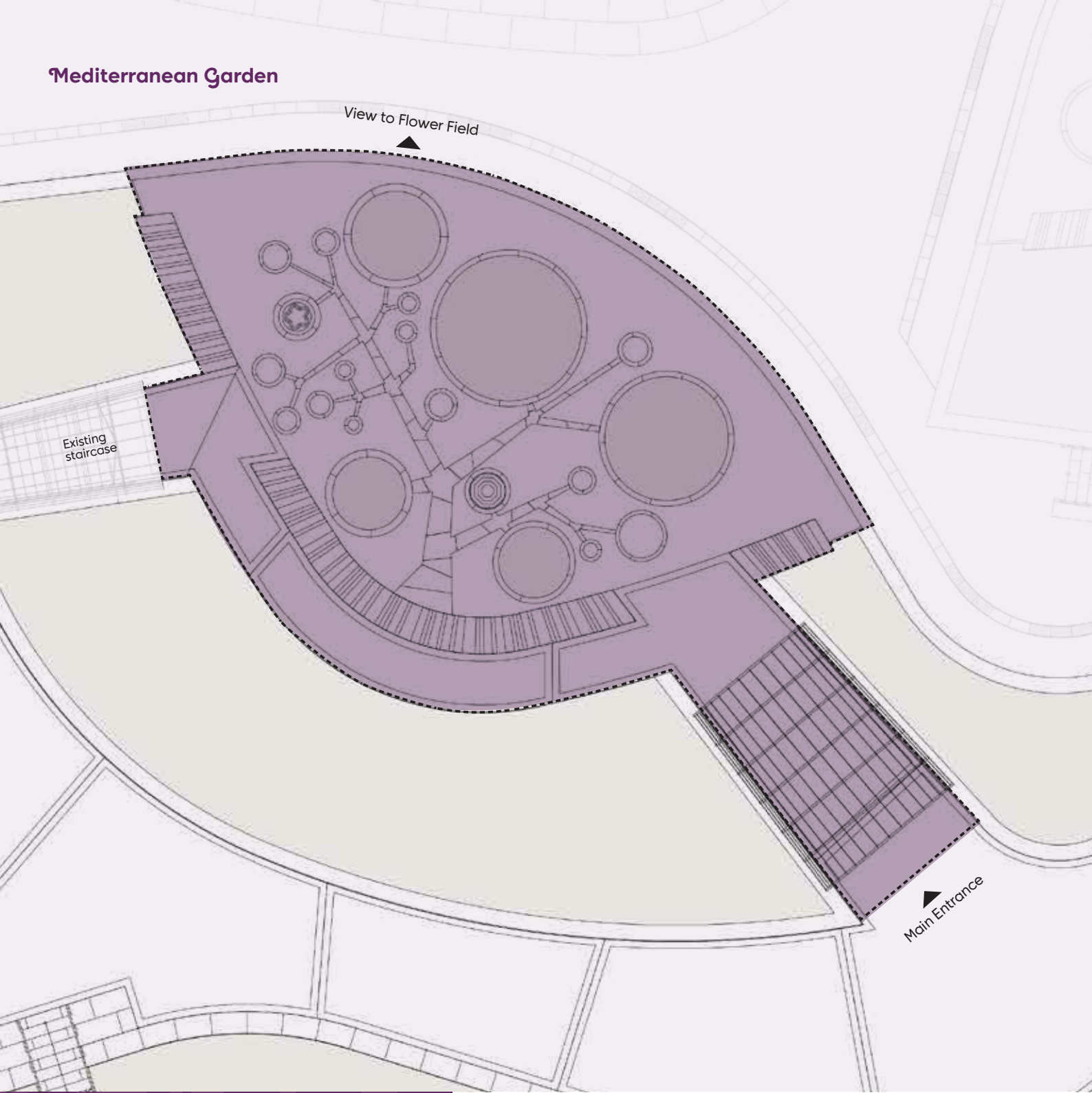
Suitable for

- Wedding Solemnisations

Transport / Access

- Nearest carpark is Main Entrance Basement Carpark with 420 carpark lots
- About a 5-minute walk from the Visitor Centre, Coach Bay and Main Entrance Basement Carpark
- About a 15-minute walk from Bayfront MRT Station
- About 5-minute ride via Shuttle Service from Bayfront Plaza

Mediterranean Garden



LOCATION



Size
• 248 square metres

South American Garden



South American Garden offers an intimate garden setting for your wedding solemnisation under the canopy of the large Chilean Wine Palms, as it overlooks the colourful floral display at the Flower Field. Set within Flower Dome - a world of perpetual spring - South American Garden makes an ideal venue to show your everlasting affection.

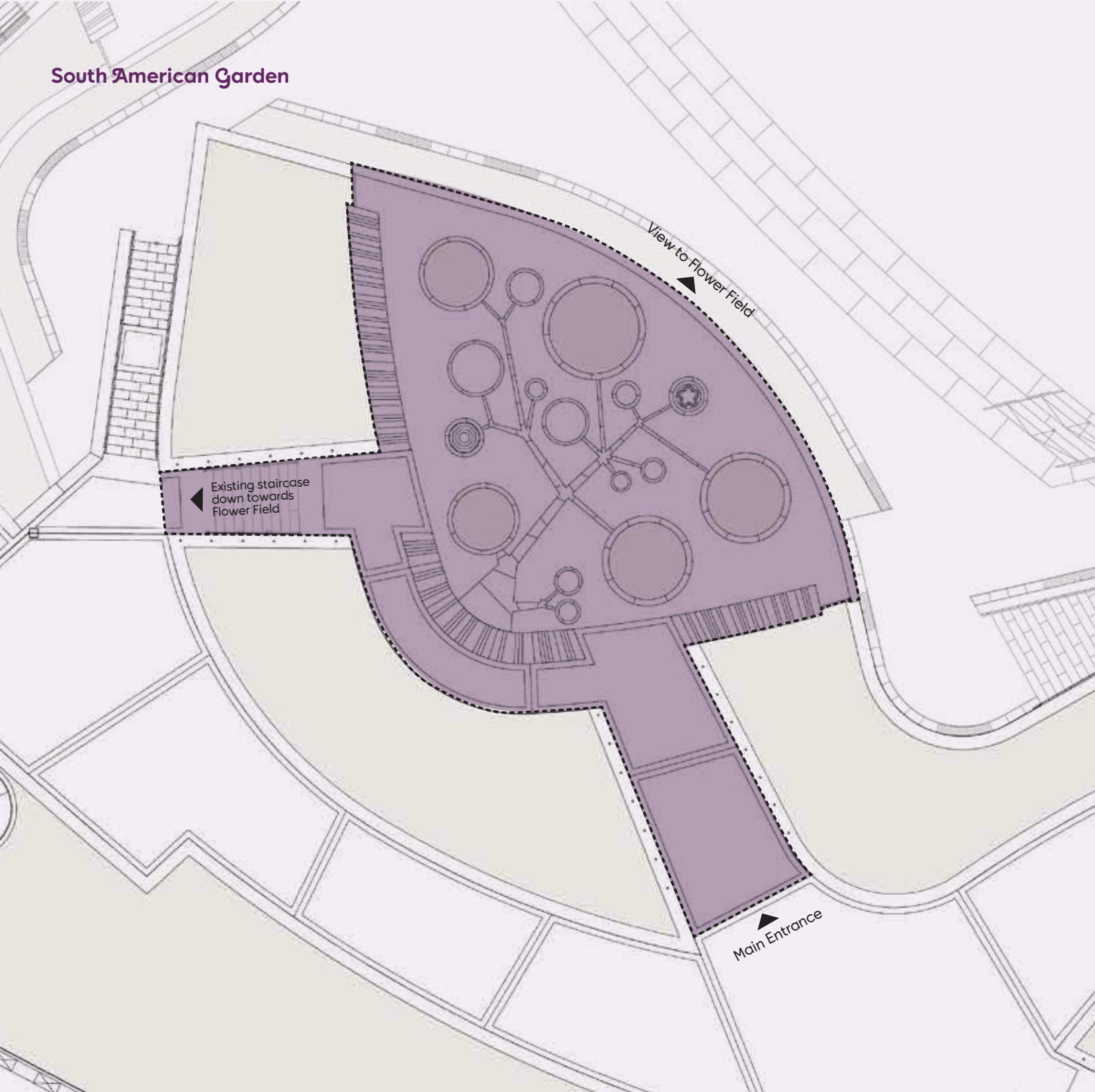
Suitable for

- Wedding Solemnisations

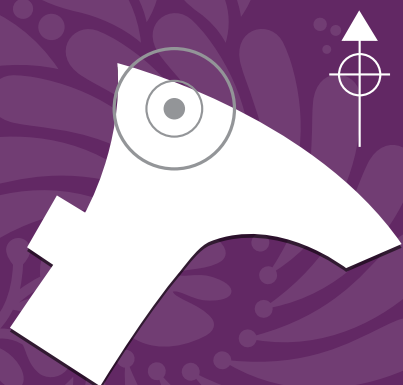
Transport / Access

- Nearest carpark is Main Entrance Basement Carpark with 420 carpark lots
- About a 5-minute walk from the Visitor Centre, Coach Bay and Main Entrance Basement Carpark
- About a 15-minute walk from Bayfront MRT Station
- About 5-minute ride via Shuttle Service from Bayfront Plaza

South American Garden



LOCATION



Size

• 250 square metres

Floral Fantasy / SG50 Lattice



At Floral Fantasy, guests are promised an exclusive, dream-like experience where flowers, artistry and technology meet. On top of a fantastical corporate event here, you and your guests can explore Gardens by the Bay virtually on a 4D ride. Available for 2 hours, 4 hours or half day booking.

The additional space at SG50 Lattice will complement your event at Floral Fantasy. This award-winning lattice, designed by students from Singapore University of Technology and Design can complete the magical event experience you are looking for.

Suitable for

- Floral Fantasy
 - Drinks Reception
- SG50 Lattice
 - Standing Breakfast
 - Evening Cocktail Reception

Transport / Access

- About a 10-minute walk to Cloud Forest, Flower Dome and Main Entrance Basement Carpark
- Nearest carpark is Bayfront Plaza Carpark with 172 lots
- Next to Bayfront MRT Station

Floral Fantasy



LOCATION



Size

- Floral Fantasy
 - 1,500 square metres
- SG50 Lattice
 - 680 square metres

Promenade Lawn



Framed by a beautiful waterfront and lush open lawns, amidst the serenity of Bay East Garden, Promenade Lawn is a verdant venue suitable for any outdoor event. Located near Bay East Bridge and various other facilities, this beautifully landscaped space along the waterfront promenade offers breathtaking views of Marina Bay and the city skyline. Make a splash with water sports, have a field day with a grand carnival, or simply chill out with movies under the stars.

Suitable for

- Family day carnivals
- Sporting events like dragon boat racing, canoeing and running
- Special-themed events
- Outdoor movie screenings

Transport / Access

- Drive to Bay East Garden via Tanjong Rhu Road
- Nearest carpark is Bay East Garden Carpark (opposite PAssion WaVe Building) with 234 carpark lots
- About a 20-minute walk from Marina Barrage
- About a 5-minute walk from Bay East Garden Visitor Centre and Bay East Garden Carpark

Promenade
Lawn

Passion Wave Building

Bay East Bridge

Carpark

Bay East
Visitor Centre

To Stadium
MRT Station

LOCATION



Size

- 3,000 square metres

Facilities

- Designated access for service vehicles
- Nearby public washrooms for guests

Bay East Bridge



Sheltered beneath Benjamin Sheares Bridge, Bay East Bridge is a versatile venue that is ideal for many types of events. Be it a special festival or major sporting event on land or water, the experience is complemented with breathtaking views of the waterfront skyline at Bay South. Bay East Bridge's open hardscape allows instant access to Promenade Lawn and water sports facilities like a pontoon and more, right at the edge of the scenic Bay East Garden.

Suitable for

- Family day carnivals
- Sporting events like dragon boat racing, canoeing and running
- Special-themed events

Transport / Access

- Drive to Bay East Garden via Tanjong Rhu Road
- Nearest carpark is Bay East Garden Carpark (opposite PAssion WaVe Building) with 234 carpark lots
- About a 20-minute walk from Marina Barrage
- About a 5-minute walk from Bay East Garden Visitor Centre and Bay East Garden Carpark

Bay East Bridge

Carpark

Passion Wave Building

Bay East Visitor Centre

To Stadium
MRT Station

Promenade Lawn

LOCATION



Size

- 2,100 square metres (half)
- 4,200 square metres (whole)

Facilities

- Designated access for service vehicles
- Nearby public washrooms for guests
- Open hardscape (no grass returfing required)
- Partially sheltered by Benjamin Sheares Bridge



For queries on booking of event spaces at Gardens by the Bay,
please contact: venue.hire@gardensbythebay.com.sg



gardensbythebay.com.sg

18 Marina Gardens Drive Singapore 018953

