



Unforgettable Moments Begin at Gardens by the Bay



Gardens
by the Bay



Cloud Forest



Flower Dome

Where nature and wonder enhance every occasion

Whether it's the stunning floral displays in the Flower Dome, the exotic plants on the 35-metre-tall mountain in the Cloud Forest, the whimsical floral artistry in Floral Fantasy, or the awe-inspiring Supertrees, Gardens by the Bay has something that will appeal to everyone.



Floral Fantasy



OCBC Skyway



Awards

Top Tourist Attraction
Influential Brands 2024

Best Theme Attraction
TTG Travel Awards 2022 to 2024

2023 Garden Tourism Award
Gardens of the World Worth Travelling For in 2024
International Garden Tourism Conference

Guinness World Records 2015
Largest Glass Greenhouse – Flower Dome
Guinness World Records

Trip.Best 2025 Global Rankings
No.1 Night Attraction in the World
Trip.com

No.1 Attraction in Asia
No. 8 Attraction in the World
Tripadvisor Travellers' Choice Awards 2024

Best Theme Attraction (International)
TTG China Travel Awards 2024 and 2025

Singapore Tourism Awards 2024
Outstanding Achievement in Sustainability
Singapore Tourism Board



Sustainability in the Gardens

Since opening in 2012, Gardens by the Bay has welcomed over 100 million visitors. Beyond just being one of Singapore's top attractions, Gardens by the Bay is also an advocate of sustainability principles. Horticultural waste from the Gardens and around Singapore is turned into energy to power the chillers of Flower Dome and Cloud Forest. Several of the Supertrees have photovoltaic cells on their canopies, which allows solar energy to be harnessed to light them up at night.



Flower Dome

Rediscover your Sense of Wonder

Enter a world of perpetual Spring! Spectacular and innovative, it is the largest glass greenhouse in the world as listed in the 2015 Guinness World Records! Be amazed by changing display of flowers and plants from the Mediterranean and semi-arid regions.



Cloud Forest

Discover a Hidden Jungle

Explore the tropical highlands amidst orchids, pitcher plants and ferns from the cool-moist Tropical Montane region. Be amazed as you encounter our breath-taking indoor waterfall at 35 metres and descend through the surreal mist-filled Cloud Walk and Treetop Walk.



Supertree Grove

Stand in awe of the Supertrees

Standing 25 to 50 metres tall, the Supertrees are designed with large canopies that provide shade in the day and come alive with an exhilarating display of lights and sounds at night.



OCBC Skyway

A different point of view

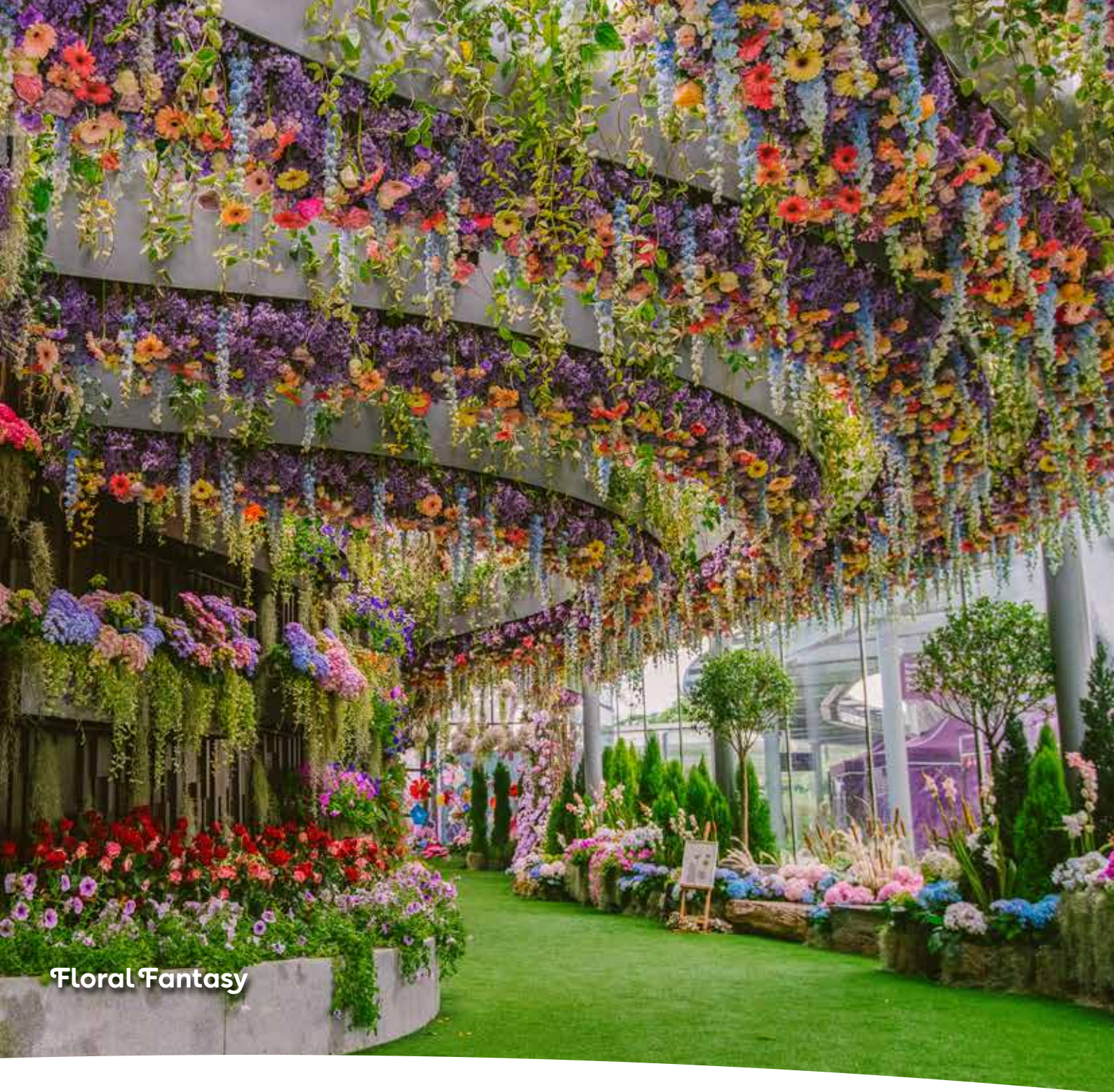
Enjoy the most enthralling views on the OCBC Skyway. Suspended between two Supertrees at 22 metres above ground, this 128-metre-long aerial walkway offers marvellous opportunities to capture that postcard-worthy shot of the Gardens and Marina Bay skyline.



Supertree Observatory

Postcard-perfect View

Located at the tallest Supertree's canopy, the Supertree Observatory offers unparalleled views of Gardens by the Bay's lush surrounds and the Marina Bay area. Enjoy refreshments, an immersive digital learning experience, endless photo opportunities, and an unforgettable time at the Gardens' highest point!



Floral Fantasy

Escape into the Surreal

A stone's throw from Bayfront MRT station, Floral Fantasy offers a magical escape among suspended bouquets and creative floral arrangements. Explore the four diverse garden landscapes, and dive into a 4D ride of a dragonfly's journey through Gardens by the Bay.



Floral Fantasy



Waterview Room

Perfect venue for any occasion

Located along the Marina Bay Waterfront and nestled in the verdant Gardens, our event venue spaces provide the perfect setting for an unforgettable experience. From large, spacious grounds in our lush landscape to picturesque sceneries and breathtaking views of iconic structures, the Gardens offer ideal spaces for all occasions.



Flower Field Hall



Silver Garden

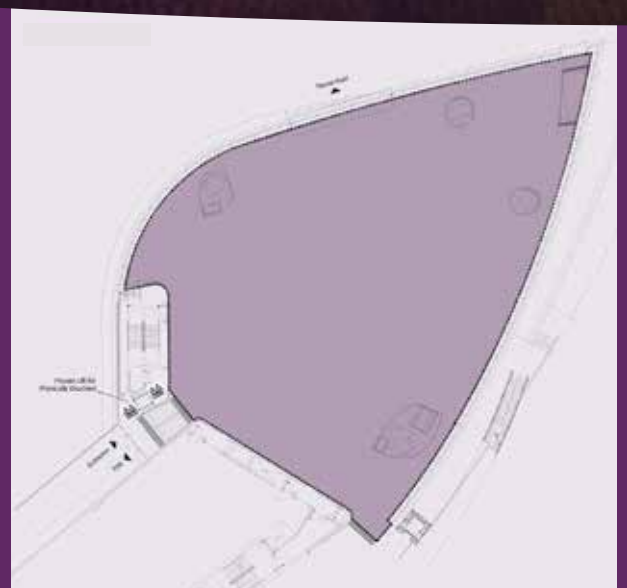


Flower Field Hall

Host an unforgettable event

Set within Flower Dome, Flower Field Hall offers full views of the perpetual blooms at Flower Field on one end, and a spectacular panorama of the Marina Bay skyline on the other. That's not all.

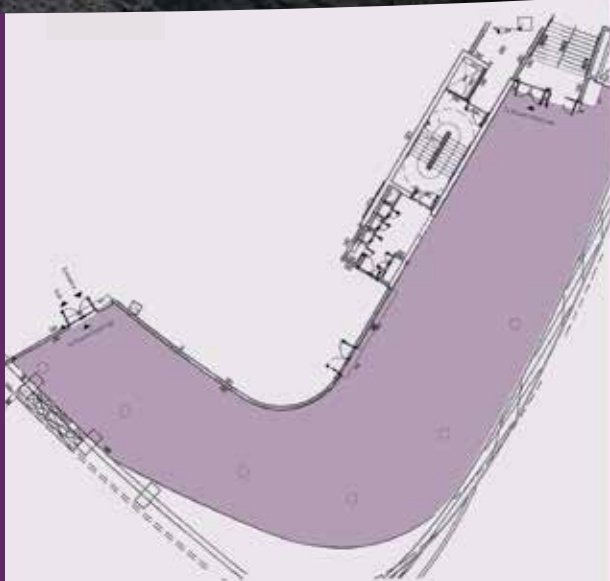
Specially-programmed LED lights add to the enchanting setting, softly illuminating the hall with different colours of the rainbow.



Area: **1,200 sqm**
 Capacity: **1,100 pax** (standing cocktail)
800 pax (theatre seating)
700 pax (sit-down dinner)



Waterview Room



Area: **600 sqm**
Capacity: **500 pax** (standing cocktail)
300 pax (sit-down dinner)
200 pax (theatre seating)

Make a lasting impression

Backed by superb views of the Marina Bay waterfront and Bay East Garden, Waterview Room offers a scenic setting for events, from corporate functions to intimate ceremonies. Should you desire, you can also book the adjacent Flower Field Hall, to flexibly open up greater room for your guests.



The Meadow

A world-class location for large-scale events

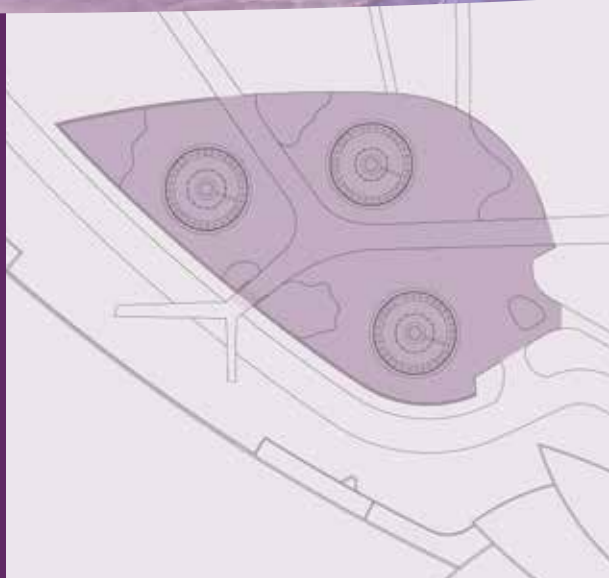
The Meadow is Singapore's largest outdoor garden event space. The panoramic view of the iconic Conservatories, Supertrees and Singapore's downtown cityscape provides the most spectacular backdrop for mega concerts and other large-scale events.



Area: **22,000 sqm**
Capacity: **30,000 pax** (standing)
7,200 pax (seating)
3,600 pax (sit-down dinner)



Silver Leaf



Area: **1,360 sqm**
Capacity: **500 pax** (standing cocktail)
300 pax (sit-down dinner)
200 pax (theatre seating)

Make it memorable under the Supertrees

Overlooking the idyllic Dragonfly Lake, Silver Leaf offers a stunning setting for both private and corporate events – under the canopy of silver-hued Supertrees.



Secret Life of Trees

An intimate garden for your guests

With superb views of Supertree Grove, the picturesque al fresco setting promises countless photo opportunities and moments to treasure, especially when the Supertrees come alive in an exhilarating display of dancing lights at night.



Area: **475 sqm**
Flat Lawn: **165 sqm**
Capacity: **120 pax** (standing)



Champagne @ OCBC Skyway



Area: **128m long**
Capacity: **80 pax** (standing)

Heighten your event experience

Arcing across Supertree Grove, OCBC Skyway is an aerial walkway 22 metres above ground. Guests will enjoy a scenic stroll with breathtaking views of the city skyline. The Garden Rhapsody light and sound show will be exclusively scheduled for guests to marvel at the Supertrees in a musical display of special effects.



Floral Fantasy

Excite your guests with a magical experience

Floral Fantasy

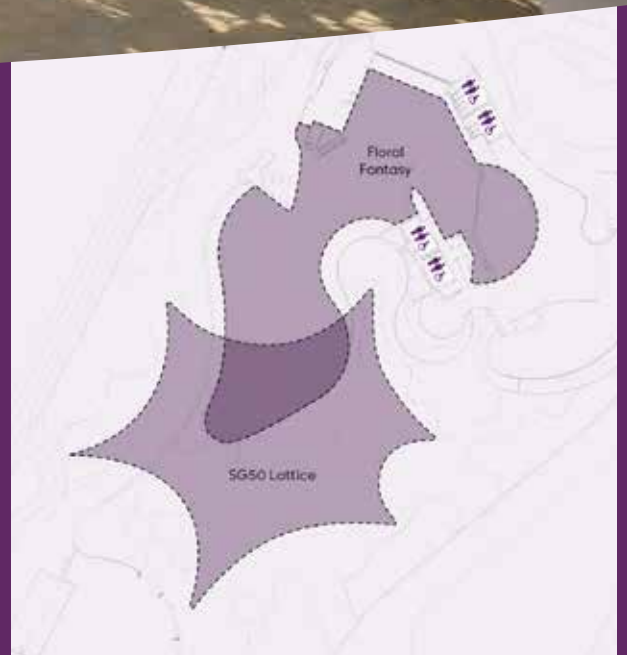
At Floral Fantasy, guests are promised an exclusive, dream-like experience where flowers, artistry, and technology meet.

SG50 Lattice

The additional space at SG50 Lattice is the perfect complement to your event at Floral Fantasy. This award-winning lattice, designed by students from Singapore University of Technology and Design, lends an added magical touch that will leave your guests spellbound.



SG50 Lattice



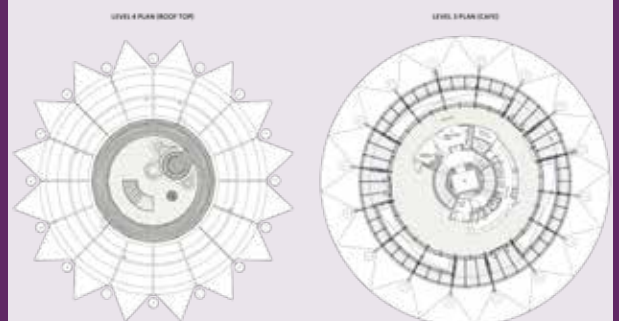
Floral Fantasy Area: **1,500 sqm**
 SG50 Lattice Area: **680 sqm**
 Capacity: **300 pax** (standing)
60 pax (theatre standing)
 Floral Fantasy
 & SG50 Lattice: **500 pax** (flow)



Supertree Observatory

Breathtaking cityscape views

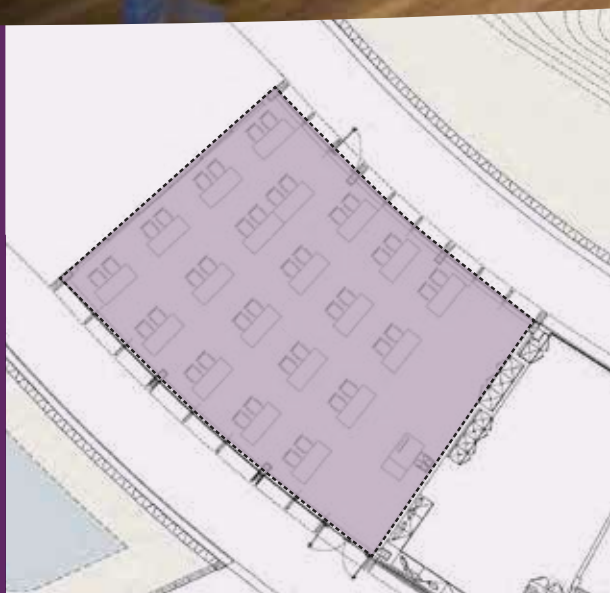
Located at the canopy of the tallest Supertree, Supertree Observatory is an open-air rooftop deck. Here, your guests can soak in 360-degree panoramic views of the Marina Bay area and lush surroundings of Gardens by the Bay.



Area Indoor: **120 sqm**
 Roof top: **140 sqm**
 Capacity: **80 pax** (indoor & outdoor)



Ficus Room



Area: **135 sqm**

Capacity

Classroom seating: **40 pax**

Theatre seating: **100 pax**

A multipurpose space for multiple types of events

Ideal for all types of corporate events—from seminars and workshops to product launches. Located at Active Garden, the venue also offers access to additional spaces such as Waterfront Plaza, Active Garden Lawn, and Moongate Lawn, giving you greater flexibility for your event.



Waterfront Plaza

The perfect space for your events come rain or shine

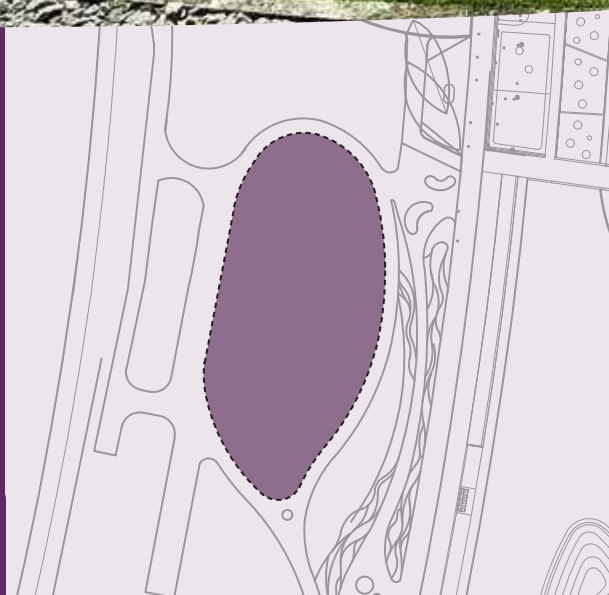
Located in Active Garden, Waterfront Plaza offers a sheltered open space with breathtaking views of Marina Bay and the city skyline. It's the perfect venue for special-themed events, fancy cocktail receptions, or even team building events.



Area: **210 sqm**
Capacity: **100 pax** (theatre seating)
120 pax (standing)



West Lawn (Parcel B)



Area: **3,500 sqm**
Capacity: **2,500 pax** (standing)

A versatile space designed for unforgettable moments

West Lawn (Parcel B) located beside the Active Garden and a stone's throw from Bayfront MRT station, offers a naturally landscaped, open-air venue space in the heart of Marina Bay.



For queries on booking of event spaces
at Gardens by the Bay, please contact:
venue.hire@gardensbythebay.com.sg



gardensbythebay.com.sg

18 Marina Gardens Drive Singapore 018953

