

Gardens by the Bay

is a place with so many fun things to see and do!

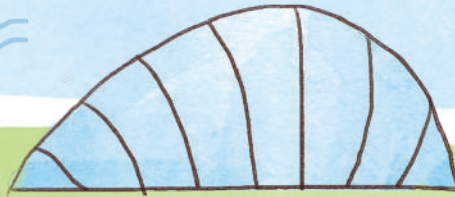
Complete your poster using these clues!

water	18	Venus Flytrap	6
Pitcher Plant	1,000	bills	

This is the Cloud Forest. It is a cool and moist glass house.



Meat-eating plants like the
P_ _ _ _ _ P_ _ _ _
and the
V_ _ _ _ F_ _ _ t_ _ _ _
live here!

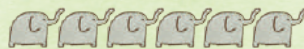


Flower Dome

This is the Flower Dome! It is a cool and dry glass house.



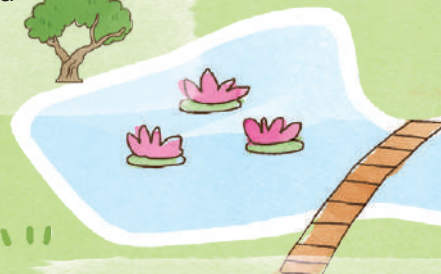
The African Baobab lives here and it weighs as much as _ elephants!



The _ _ _ _ -year-old Olive tree lives here too!



Cloud Forest



Kingfisher Lake

This is the Dragonfly Lake!
It is 1 of 2 lakes in the Gardens.

Dragonflies live in environments where the _ a _ _ _ is clean. Did you know that the logo of Gardens by the Bay is a red dragonfly? Spot it on this poster!

This is the Kingfisher Lake! It is 1 of 2 lakes in the Gardens.



Kingfishers are birds with strong b_ _ _ _ that make it easy for them to hunt for food. They eat many types of animals, which includes fish, crabs, frogs, lizards and grasshoppers.

These are Supertrees!
There are _ _ of them in the Gardens.

Did you know that the tallest Supertree is 16 storeys high, and the shortest 7.5 storeys? Most of the plants found on the Supertrees are soil-less.



Supertrees

Dragonfly Lake